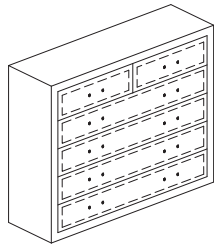
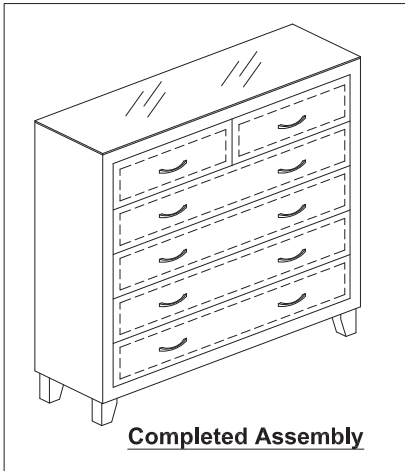
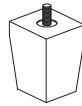


Amy Tallboy Assembly Instruction

Read this instruction carefully. Refer hardware and furniture parts list for guidance. Be sure all parts are complete, before assembling. Place all the parts on a clean and flat soft surface to prevent scratches. Refer steps provided as assembling guide.



A - Tallboy x 1






B - Feet x 4



C - Glass x 1

Part List

Hardware list		
Item	Description	Qty.
D	Plastic washer 	4 pcs
E	Handle 	10 pcs
F	Screw handle 	20 pcs

**** Handle & handle screw already fix at the inside of drawer.**



WARNING

Serious or fatal crushing injuries can occur from furniture tip-over. To help prevent tip-over :

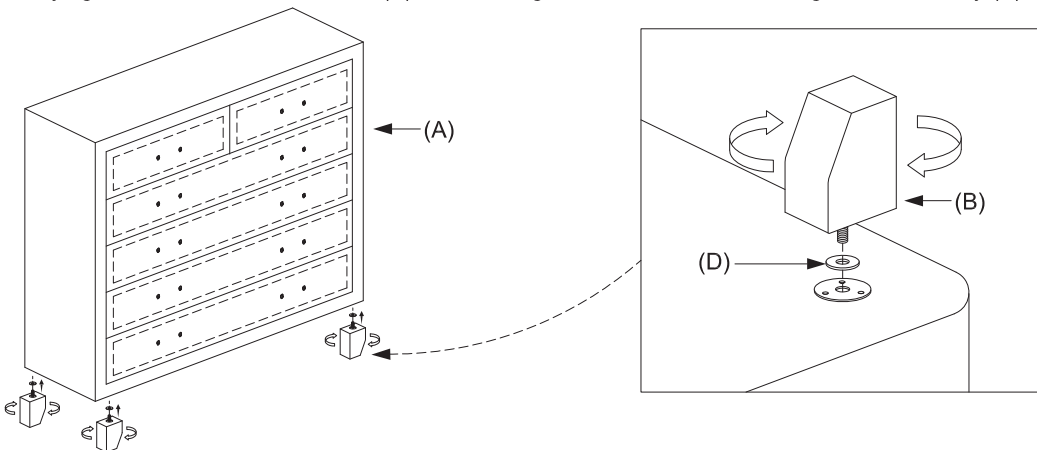
- Place heaviest items in the lowest drawers.
- Do not set TVs or other heavy objects on the top of this product, unless specifically designed to accommodate.
- Never allow children to climb or hang on drawers, doors, or shelves.
- Never open more than one drawer at a time (OR)
- Do not defeat or remove the drawer interlock system.

Use of tip-over restraints may only reduce, but not eliminate, the risk of tip-over.

This is a permanent label. Do not attempt to remove!

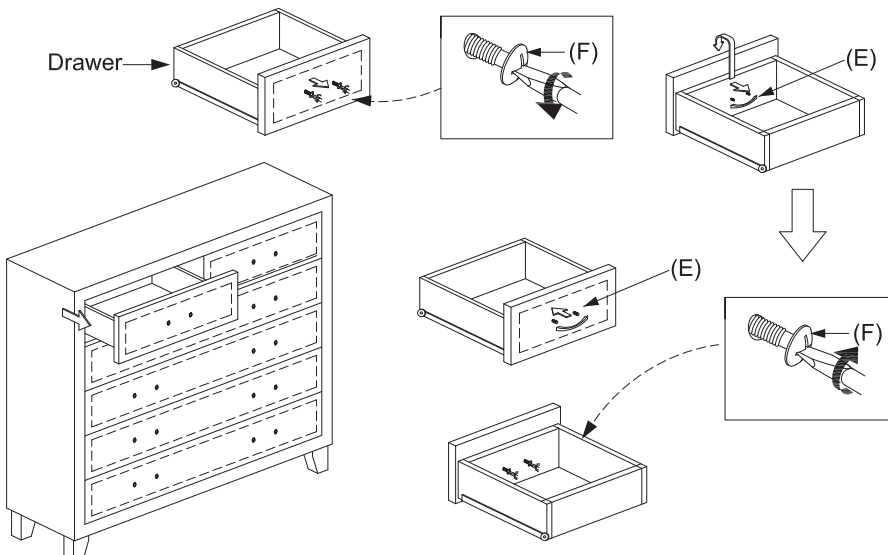
Step 1

Insert plastic washer (D) into the feet (B) bolt and fix the feet (B) into the t-nut at the bottom of tallboy (A) by turning clock wise direction until it fully tight. Make sure that the feet (B) must be aligned with front and side edges of the tallboy (A).



Step 2

Move out the drawer and loosen the handle screw (F). Revert and position the handle (E) onto the drawer front and tighten with same screw.



Step 3

Finally, slot in all the drawers and place the glass (C) at the top of tallboy (A).

