

| | |
|------------|-------------|
| CUSTOMER | NOVA TALENT |
| M/CARD NO. | 17-056 |
| DATE | 29.03.2017 |

| | | |
|----------------|--|----------|
| DESIGNED BY | APPROVED BY | SET BY |
| FARAH G & D |  SALES / SALES CO. | ART ROOM |

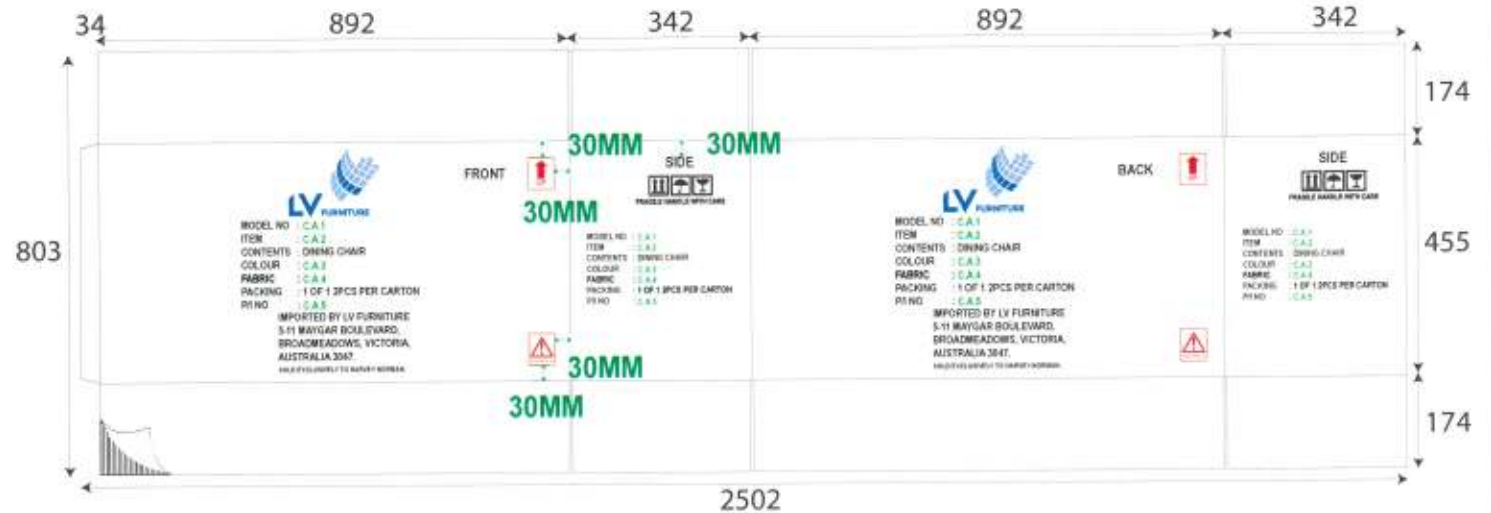
| COLOUR | | |
|--------|-------|-----|
| 1027 | | 217 |
| BLUE | BLACK | RED |

| | | | |
|-----------|-------------|----------|----------|
| BLOCK NO | | | |
| SUBSTANCE | T150/M/T150 | ABF | |
| JOINT | GLUE | Form | SA - F07 |
| MOULD NO | | Rev. No. | A |

MODEL : NV8659 CS (BX) BENSON

INK VISCOSITY (SEC.)

ID~885 X 335 X 440 MM



15MM : IMPORTED BY LV FURNITURE
5-11 MAYGAR BOULEVARD,
BROADMEADOWS, VICTORIA,
AUSTRALIA 3047.

10MM : SOLD EXCLUSIVELY TO HARVEY NORMAN.

20MM : SIDE

45MM



10MM : FRAGILE HANDLE WITH CARE

15MM : MODEL NO : C.A.1
ITEM : C.A.2
CONTENTS : DINING CHAIR
COLOUR : C.A.3
FABRIC : C.A.4
PACKING : 1 OF 1 2PCS PER CARTON
P/I NO : C.A.5

20MM : FRONT

20MM : BACK

12MM : MODEL NO : C.A.1
ITEM : C.A.2
CONTENTS : DINING CHAIR
COLOUR : C.A.3
FABRIC : C.A.4
PACKING : 1 OF 1 2PCS PER CARTON
P/I NO : C.A.5

| P/O | ITEM | C.A.1 | C.A.2 | C.A.3 | C.A.4 | C.A.5 | QTY |
|------------|------|-----------------|---------|-----------|-------------------|--------|-----|
| PL003/1701 | 1 | ORELIO / BENSON | ORECHST | LIGHT OAK | FG11202-2 STONE | 103644 | 135 |
| PL003/1701 | 1 | ORELIO / BENSON | ORECHNA | LIGHT OAK | FG11202-1 NATURAL | 103644 | 135 |

| | | | | | | | | | |
|----------------|-------------|-------------|-------------------|----------------------|--------|-------|-----|-----------|--------------|
| CUSTOMER | NOVA TALENT | DESIGNED BY | APPROVED BY | SET BY | COLOUR | | | BLOCK NO | |
| M/CARD NO. | 17-046 | ZIRA | <i>DM 3113</i> | | 1027 | | 217 | SUBSTANCE | T150/M/M ABF |
| DATE | 31.03.2017 | G & D | SALES / SALES CO. | ART ROOM | BLUE | BLACK | RED | JOINT | TYING |
| MODEL : ORELIO | | | | INK VISCOCITY (SEC.) | | | | Form | SA - F07 |
| | | | | | | | | Rev. No. | A |



200MM

15MM : MODEL NO : ORELIO
 ITEM : OREDT
 CONTENTS : DINING TABLE
 COLOUR : C.A.1
 PACKING : 1PC PER CARTON
 P/I NO : C.A.2

15MM : IMPORTED BY LV FURNITURE
 5-11 MAYGAR BOULEVARD,
 BROADMEADOWS, VICTORIA,
 AUSTRALIA 3047.

15MM : SOLD EXCLUSIVELY TO HARVEY NORMAN.

30MM 

8MM : FRAGILE HANDLE WITH CARE



10MM : MODEL NO : ORELIO
 ITEM : OREDT
 CONTENTS : DINING TABLE

COLOUR : C.A.1
 PACKING : 1PC PER CARTON
 P/I NO : C.A.2

P/Io *Item* *C.A.1* *C.A.2* *QTY*
 PLW3/1701 2 LIGHT OAK 103644 80

