

ASSEMBLY INSTRUCTIONS

MODEL: B9200-KQ-HBFB , B9200-KQ-RAIL

Thank you for purchasing this quality product. Be sure to check all packing material carefully for small parts which may have come loose inside the carton during shipment. Identify and count all parts and compare with hardware list as below:

list as below:

PART LIST			
(BOX 1) BOX OF HEADBOARD			
ITEM	DRAWING	DESCRIPTION	QTY
A		HEAD BOARD	1

(BOX 2) BOX OF FOOTBOARD			
ITEM	DRAWING	DESCRIPTION	QTY
B		FOOT BOARD	1
C		WOODEN SLAT	13
D		CENTER SLAT	1
E		SLATS SUPPORT	4

(BOX 3) BOX OF SIDE RAILS			
ITEM	DRAWING	DESCRIPTION	QTY
F		SIDE RAILS	2

(BOX 2) BOX OF FOOTBOARD HARDWARE LIST				
ITEM	DRAWING	DESCRIPTION	DIMENSION	QTY
G		C.S.K SCREW (M4)	4 x 32MM	6
H		JCBC (M6) WITH WASHER	6 x P1.0 x 35MM	3
I		ALLEN KEY M4	4 x 65MM	1
J		C.S.K SCREW (M4)	4 x 16MM	4
K		C.S.K SCREW (M4)	4 x 25MM	4
L		L BRACKET	2 x 20 x 40MM	2

(BOX 2) BOX OF FOOTBOARD HARDWARE LIST				
ITEM	DRAWING	DESCRIPTION	DIMENSION	QTY
G		C.S.K SCREW (M4)	4 x 32MM	6
H		JCBC (M6) WITH WASHER	6 x P1.0 x 35MM	3
I		ALLEN KEY M4	4 x 65MM	1
J		C.S.K SCREW (M4)	4 x 16MM	4
K		C.S.K SCREW (M4)	4 x 25MM	4
L		L BRACKET	2 x 20 x 40MM	2

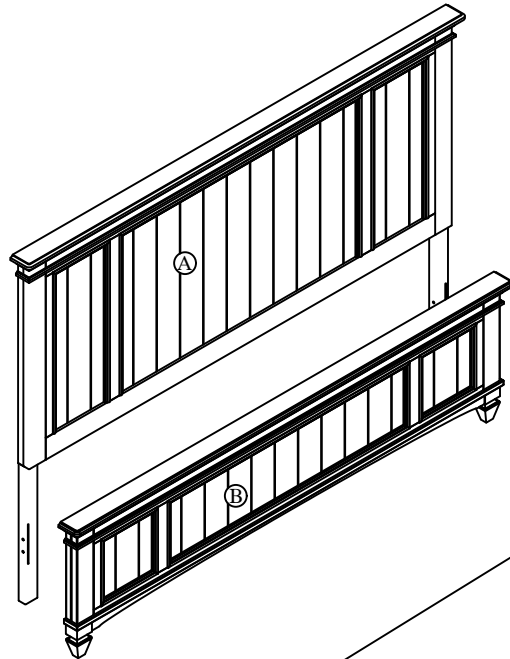
Screw Driver is not included



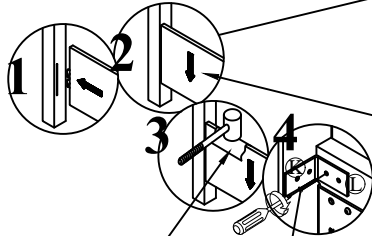
NOTE: MUST TIGHTEN SCREW PERIODICALLY. WITH USE SCREWS WILL BECOME LOOSE CHECK TIGHT OF ALL SREWS EVERY 6-8 WEEKS.
CLEANING INSTRUCTION

After assembled, clean & polish the complete parts if necessary with soft cloth and industrial recognized furniture polish.

STEP 1



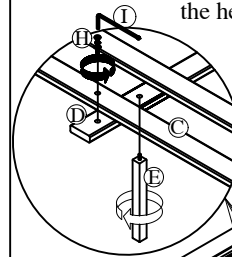
STEP 2
2 Fix both side rails to the Headboard and Footboard as below



Important !!
LEVEL THE SIDE RAIL BY COVERING WITH A SOFT CLOTH AND TAPPING WITH A HAMMER.

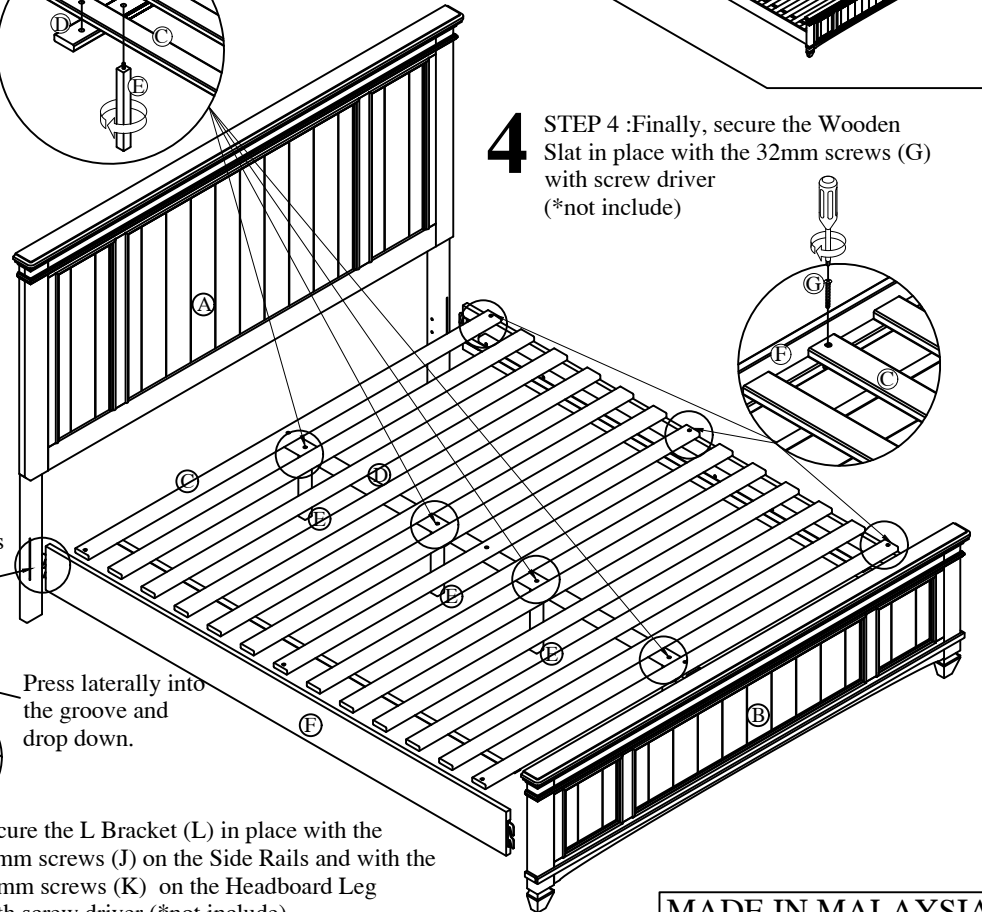
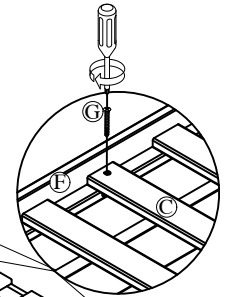
3

STEP 3 : Spread out all the Slat (C) on the Center Slat (D). Further secure JCBC screw with washer (H) to middle pre-drilled slat to the Center Slat (D). Fix the Support Leg (E) into the Slat Support (D) as show and adjust it to the height required.



4

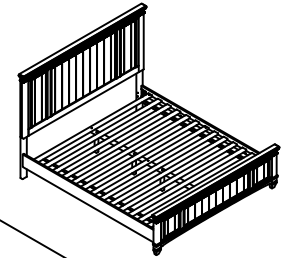
STEP 4 : Finally, secure the Wooden Slat in place with the 32mm screws (G) with screw driver (*not include)



Press laterally into the groove and drop down.

Secure the L Bracket (L) in place with the 16mm screws (J) on the Side Rails and with the 25mm screws (K) on the Headboard Leg with screw driver (*not include)

COMPLETED ASSEMBLY



MADE IN MALAYSIA

THE HARDWARE IS LOCATED IN THE PACKING ITEMS