

ASSEMBLY INSTRUCTIONS

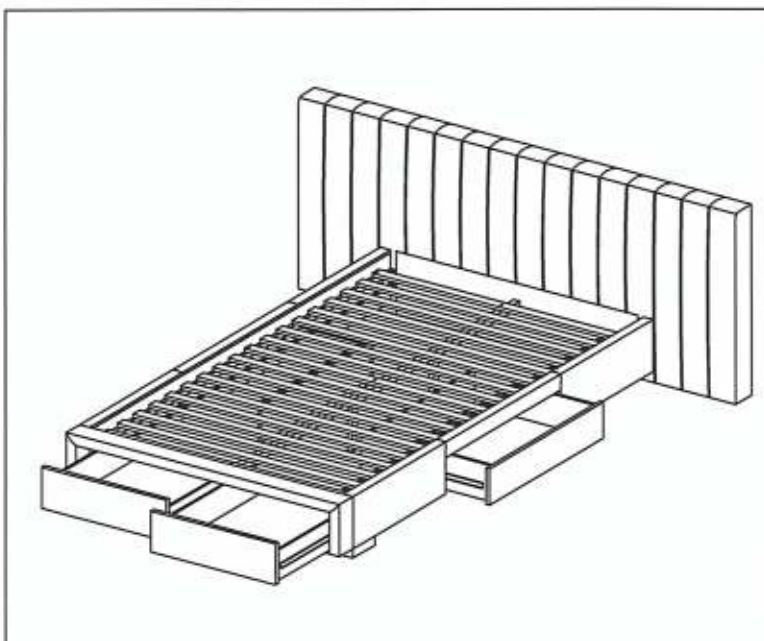
XH 8201 QUEEN BED

THANK YOU FOR PURCHASING THIS QUALITY PRODUCT. READ THIS INSTRUCTION CAREFULLY. SEE PART LIST AND HARDWARE LIST FOR GUIDANCE, BE SURE ALL PARTS ARE COMPLETE BEFORE YOU ASSEMBLE.

- CAUTIONS:
1. DO NOT FULLY TIGHTEN THE BOLTS UNTIL ALL BOLTS IS READY ASSEMBLED.
 2. DO NOT OVER TIGHTEN THE BOLTS TO AVOID CAUSING DAMAGES TO THE THREAD.
 3. KEEP ALL PART AND HARDWARE OUT TO REACH BY CHILDREN.

TOOLS NEEDED : SCREWDRIVER (NOT PROVIDED)

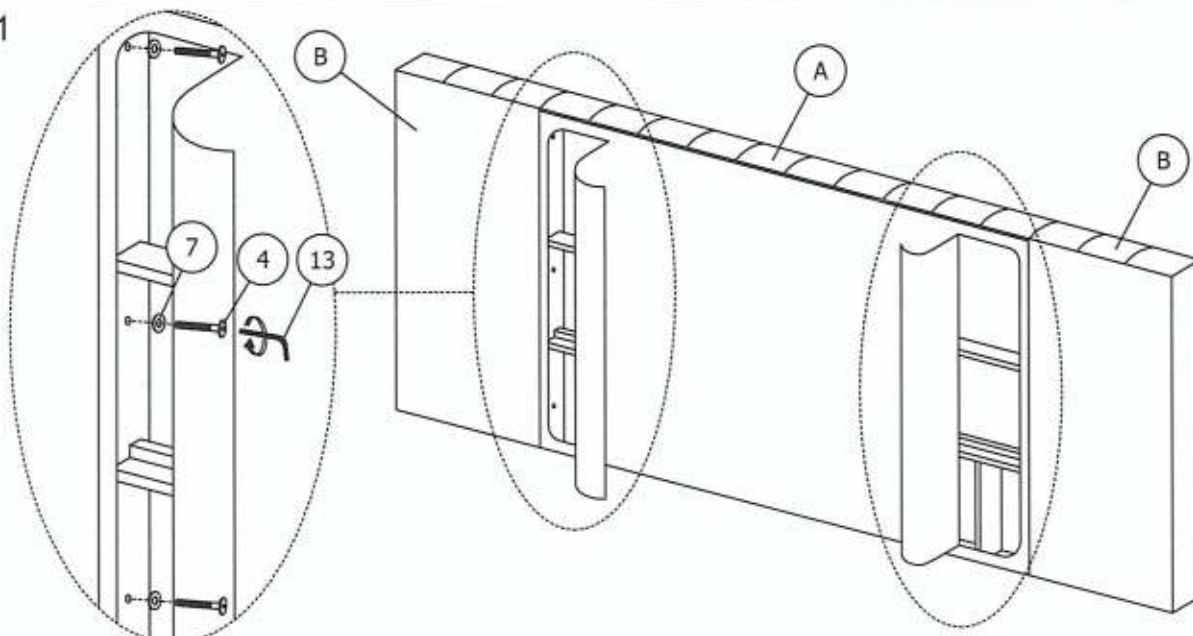
PART LIST		
ITEM	DESCRIPTION	QTY
A	HEADBOARD	1 PC
B	HEADBOARD WING (L & R)	2 PCS
C	FOOTBOARD	1 PC
D	SIDERAIL	2 PCS
E	CENTER SUPPORT	1 PC
F	CENTER SUPPORT LEG	2 PCS
G	SLATS	1 SET
H	BED LEG	2 PCS
I	DRAWER SUPPORT LEG (A) (53mm)	1 PC
J	DRAWER SUPPORT LEG (B) (58mm)	2 PCS
K	FOOTBOARD DRAWER	1 PC
L	SIDE RAIL DRAWER	2 PCS



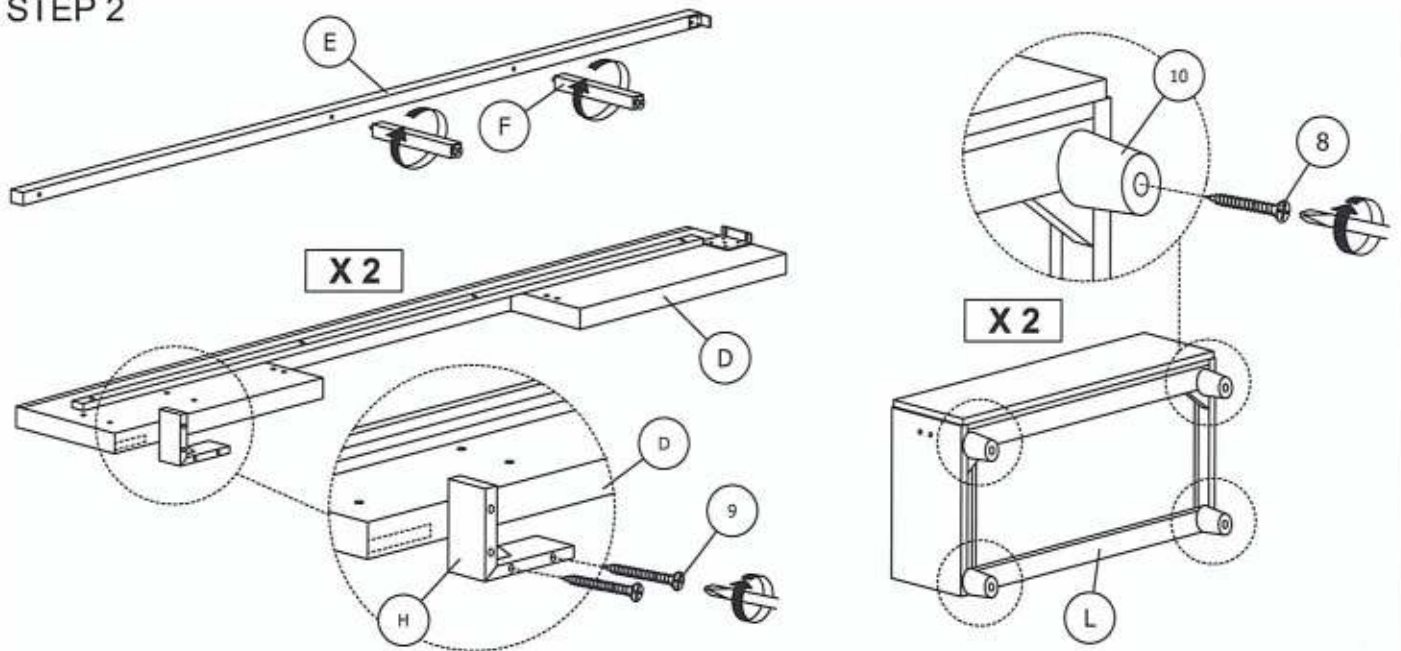
HARDWARE LIST		
ITEM	DESCRIPTION	QTY
1	JCBC BOLT M6 x 16mm 	16 PCS
2	JCBC BOLT M6 x 45mm 	13 PCS
3	JCBB BOLT M8 x 25mm 	4 PCS
4	JCBB BOLT M8 x 35mm 	6 PCS
5	M6 SPRING WASHER 	12 PCS
6	M6 FLAT WASHER 	12 PCS
7	M8 FLAT WASHER 	6 PCS

HARDWARE LIST		
ITEM	DESCRIPTION	QTY
8	CSK SCREW M4 x 38mm 	17 PCS
9	CSK SCREW M4 x 45mm 	4 PCS
10	2 1/2" SOFA LEG 	8 PCS
11	Bracket 	4 PCS
12	ALLEN KEY M4 	1 PC
13	ALLEN KEY M5 	1 PC

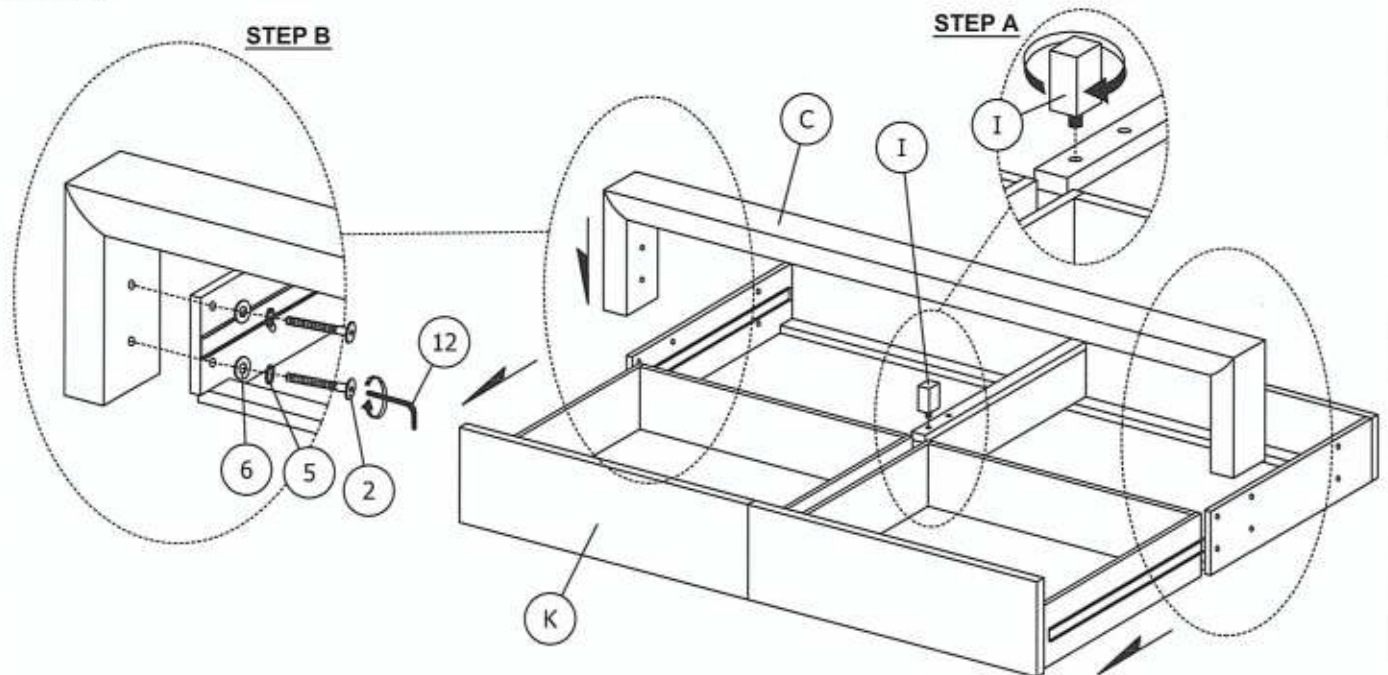
STEP 1



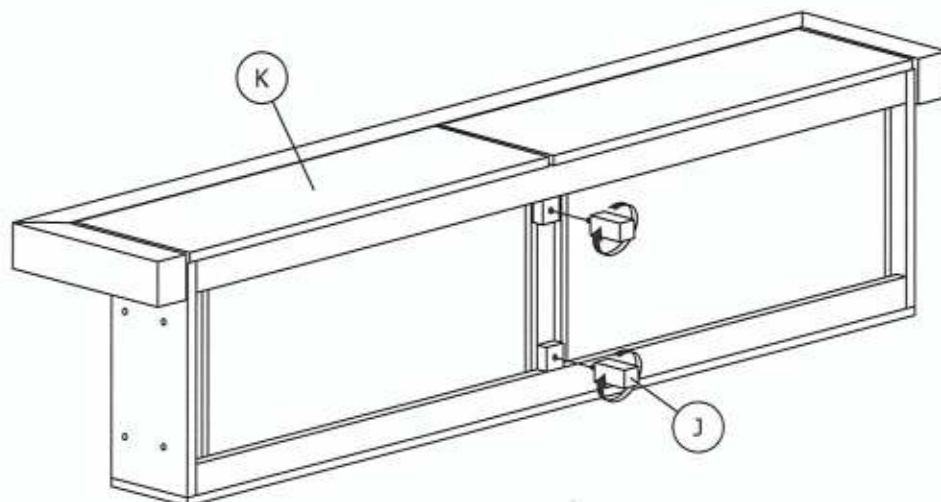
STEP 2



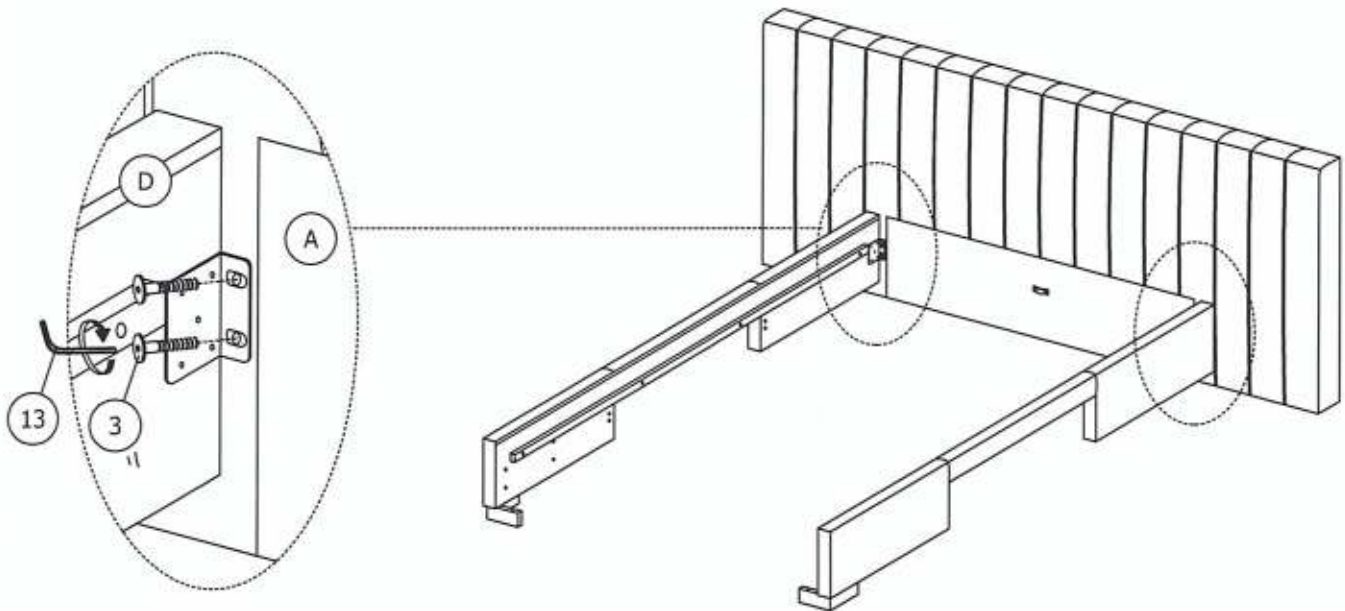
STEP 3



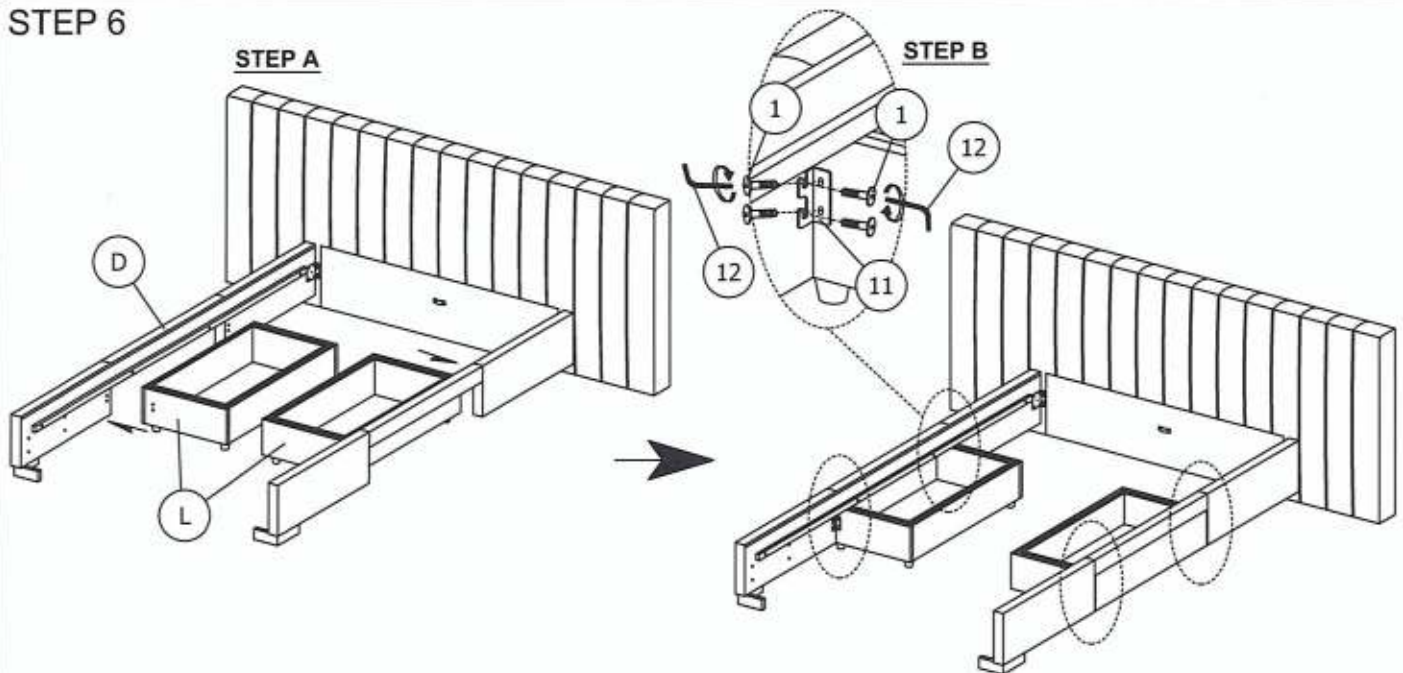
STEP 4



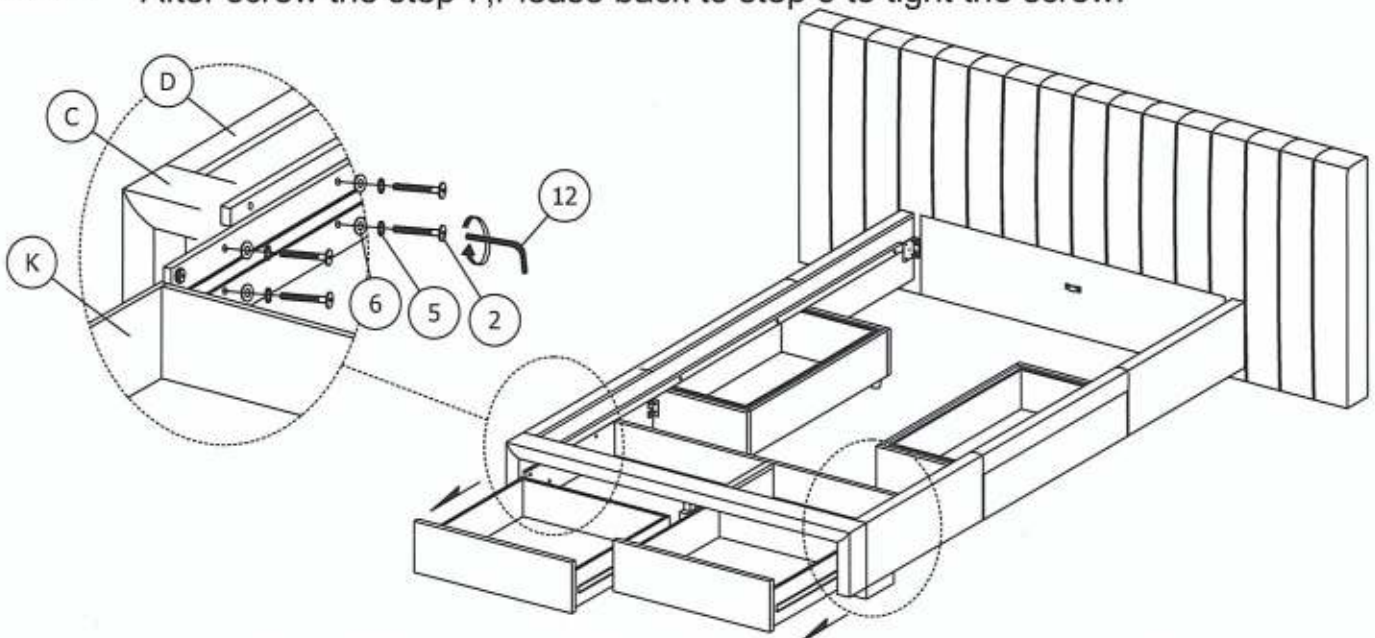
STEP 5 Do not tighten the bolt (5). Until step 7 is done screwed.



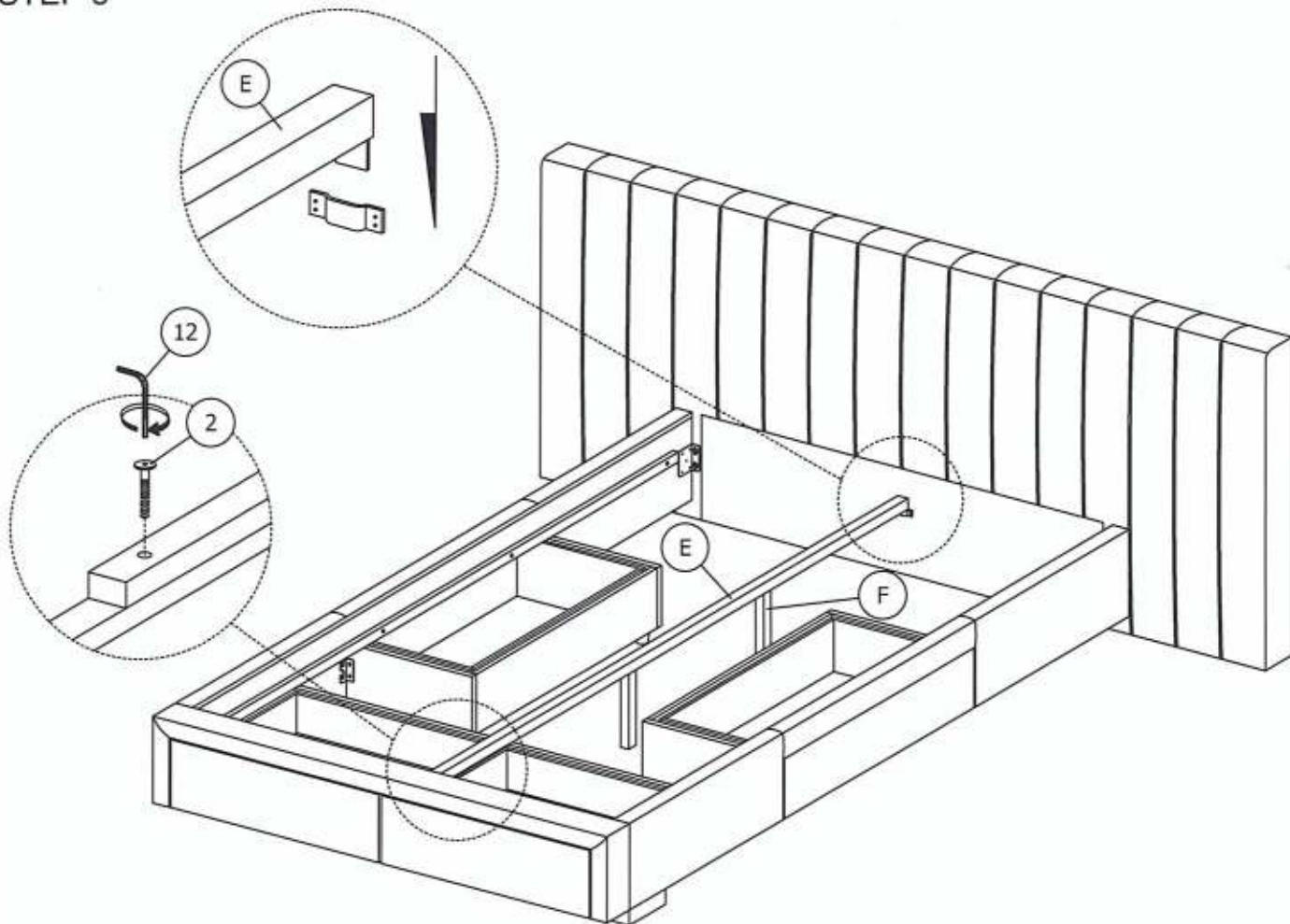
STEP 6



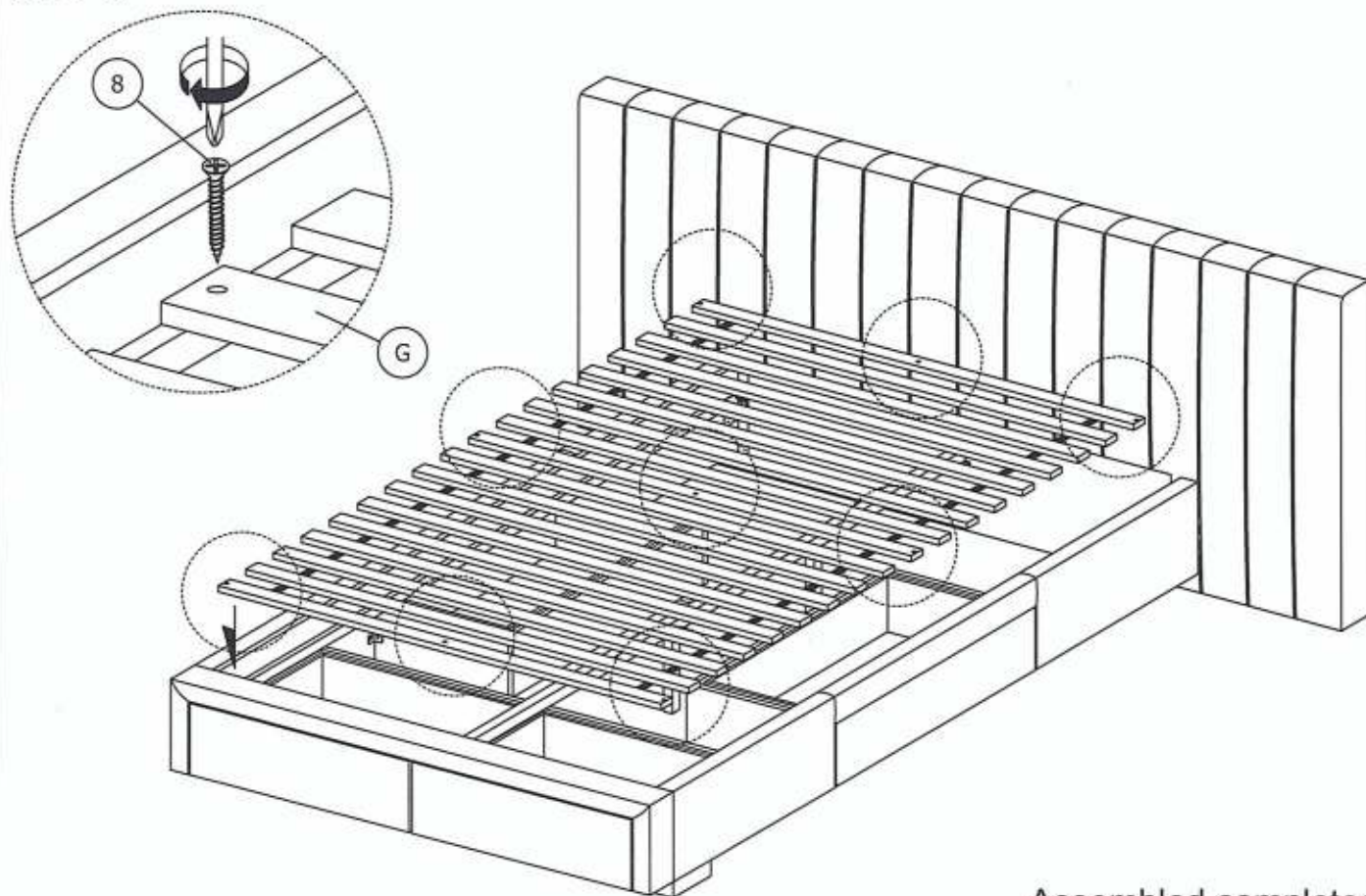
STEP 7 After screw the step 7, Please back to step 5 to tight the screw.



STEP 8



STEP 9



Assembled completed

* When moving bed position, the center support leg levelers must be adjust up right to avoid breakage of the leg and center support.