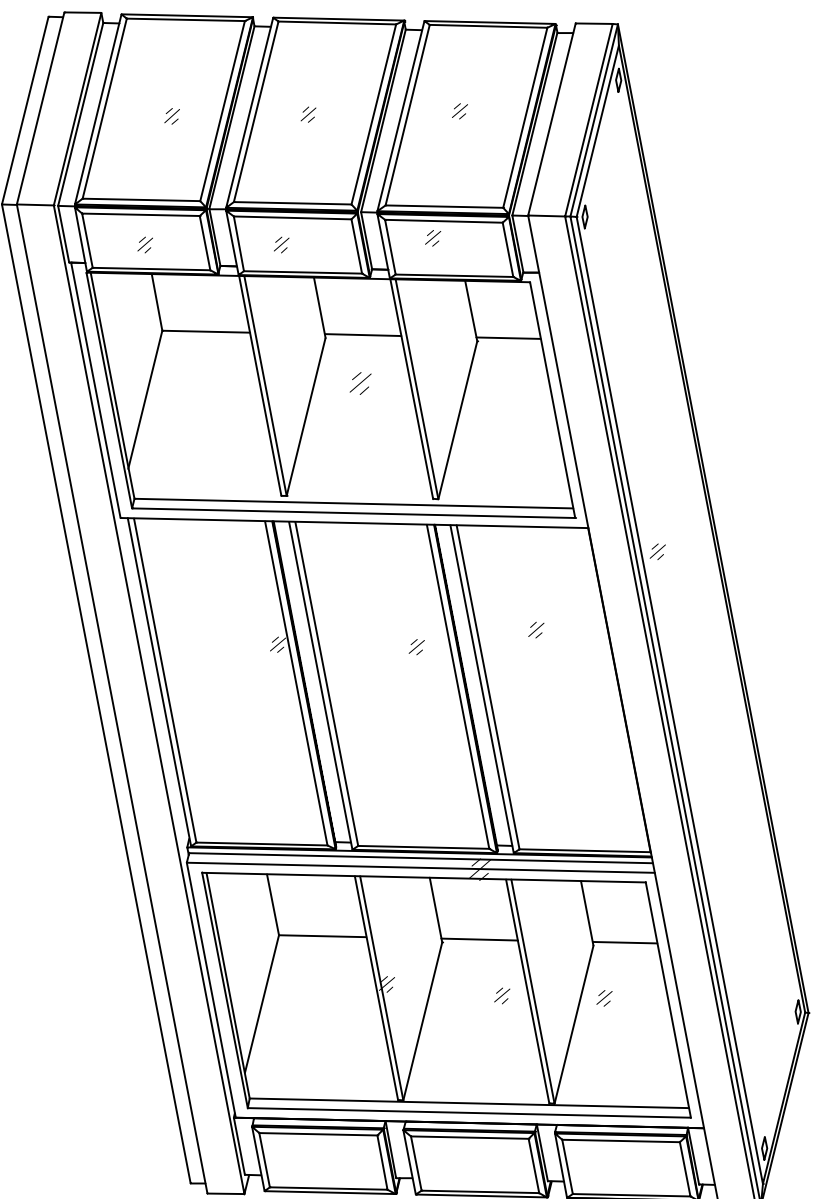


GS990 BUFFET ASSEMBLY INSTRUCTIONS



A. Door bumper
Ø 6*1=8PCS

STOP!

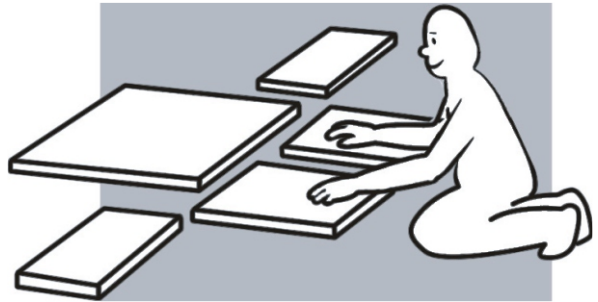
Before you start...

1



Read Instructions carefully.

2



Lay out all of the components on a soft surface as if you were preparing to do a jigsaw puzzle.

3



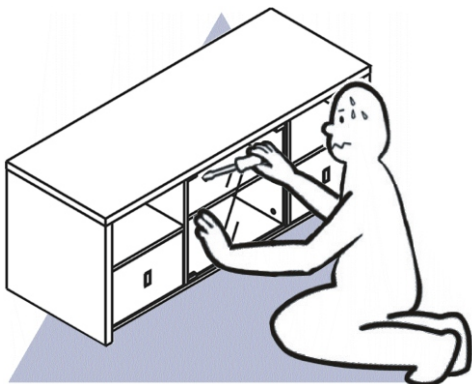
Carefully identify each component, especially those that are similar. The most common mistake is getting things back to front.

4



Separate and identify each component from the hardware pack— and rest each one in its proper location before fastening.

5



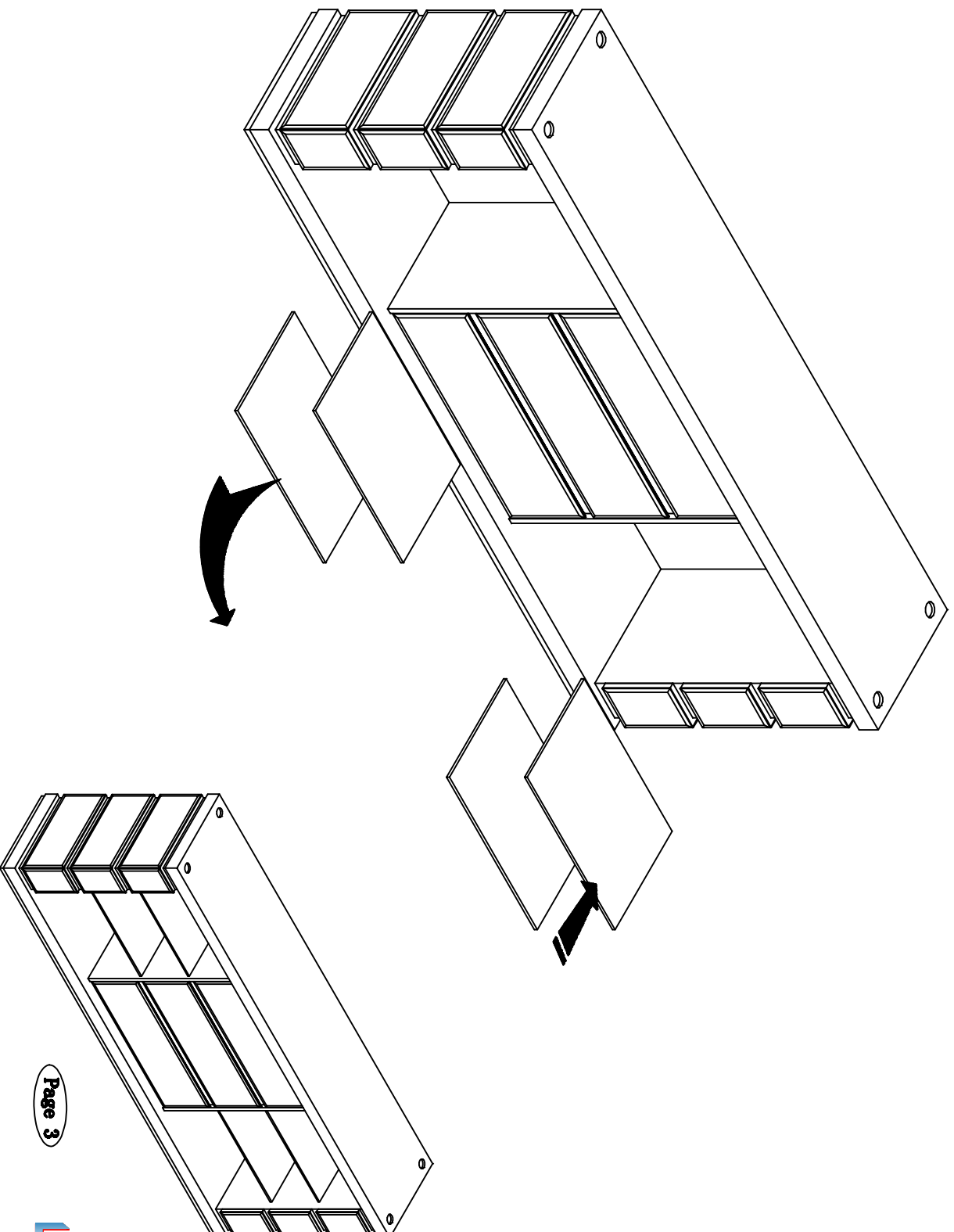
DO NOT Over-tighten screws


6

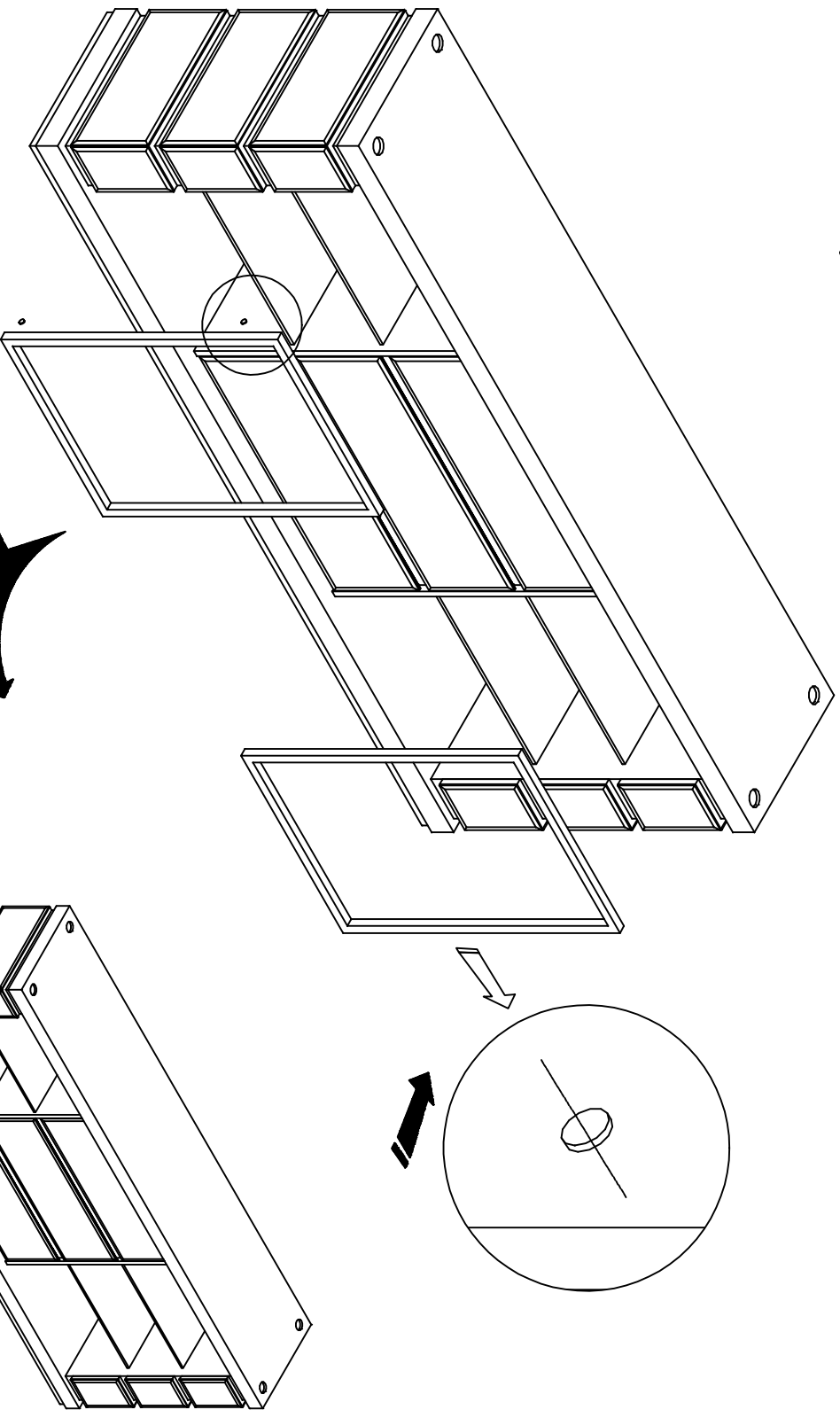


DO NOT set glue until you are certain that the parts belong together.

Step 1: Put the glass shelf on the supporter as shown.

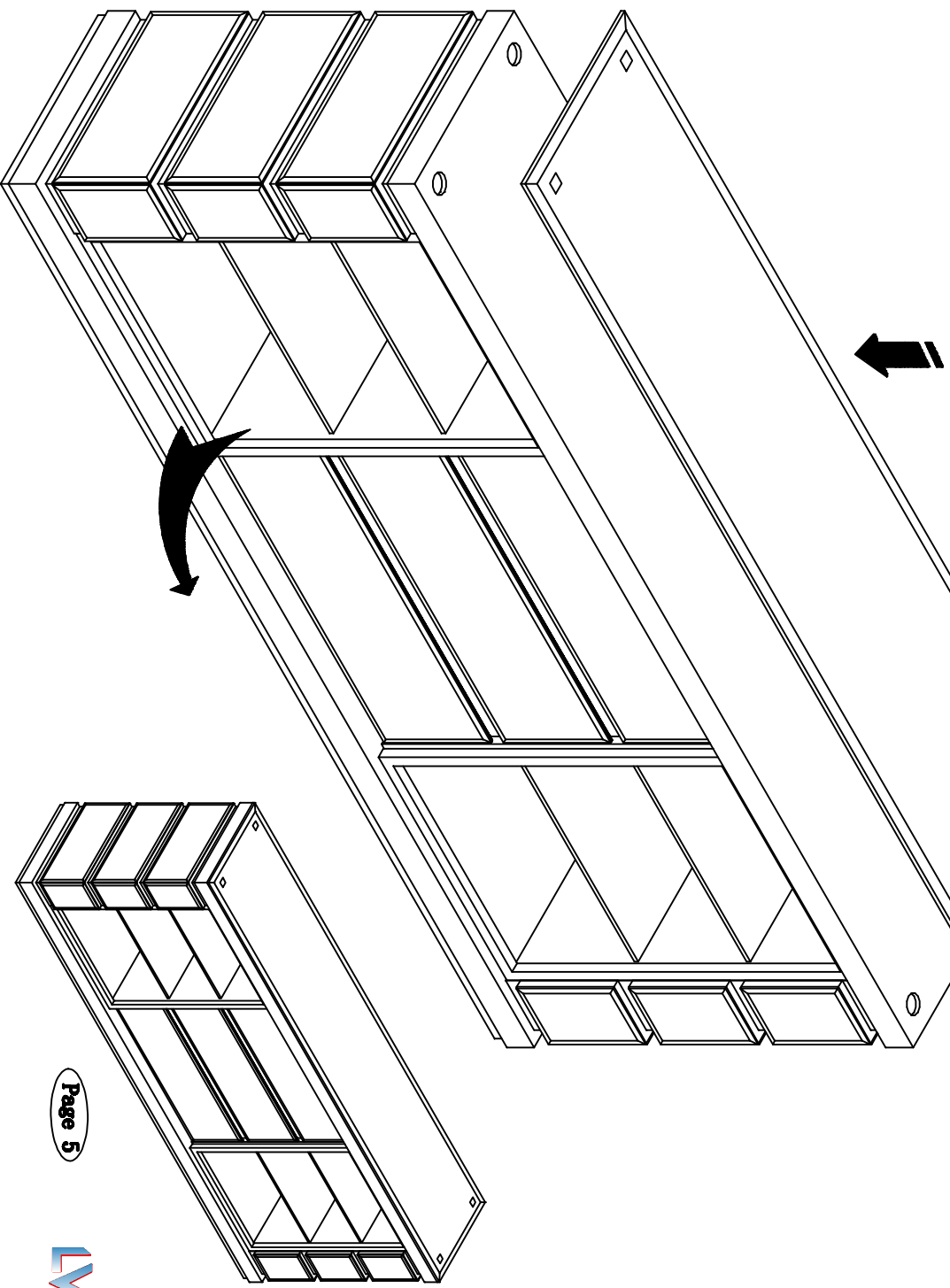


Step 2: a. Stick A () on the side frame of the door. as shown
b. Place the glass door on the runner as shown.



A. Door bumper
Ø 6*1=8PCS

Step 3: place glass to the top panel as shown.



GS990 BUFFET
UNIT COMPLETE

