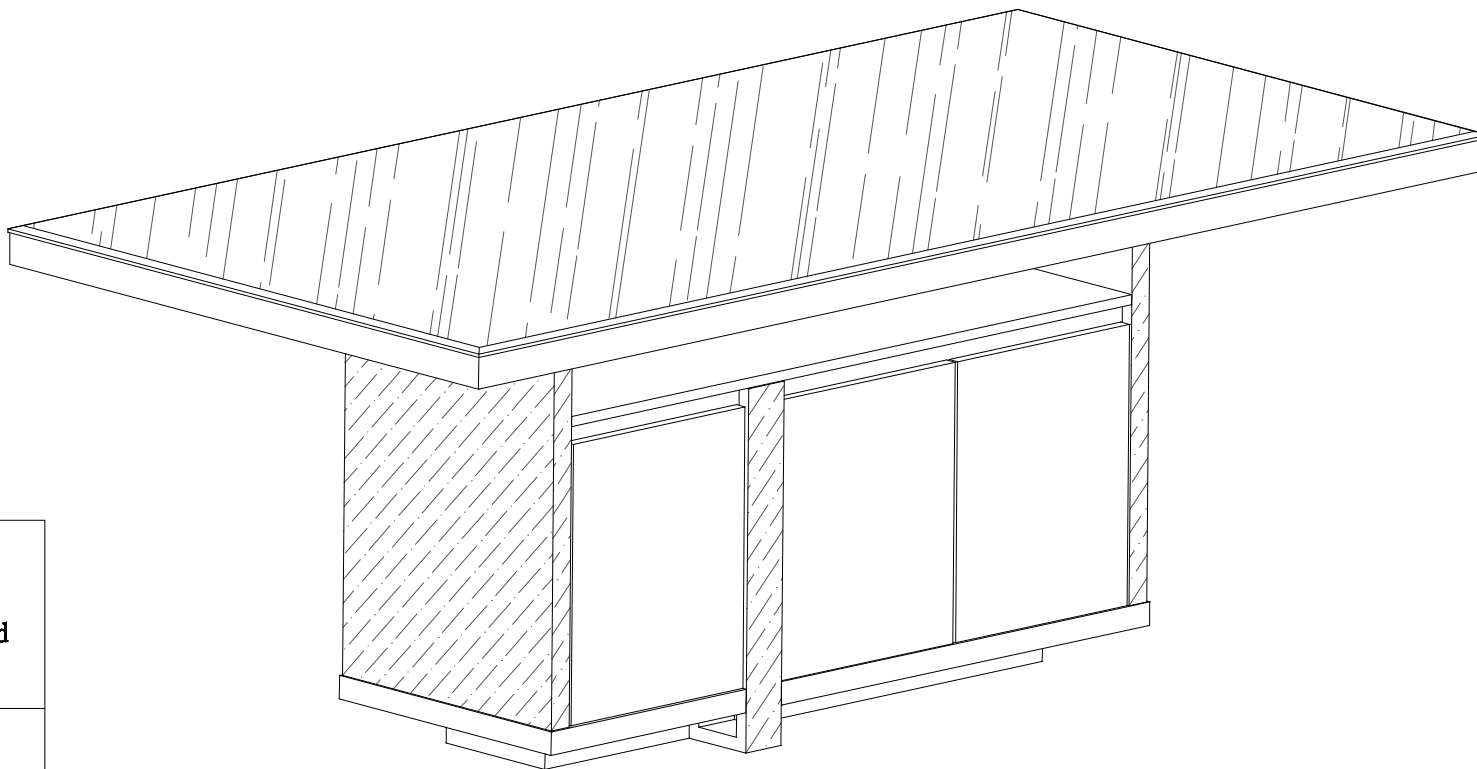


## PALERMO DINING TABLE ASSEMBLY INSTRUCTIONS



A. 4x Threaded  
wire M6x45



B. 8x Threaded  
wire M6x30



# STOP!

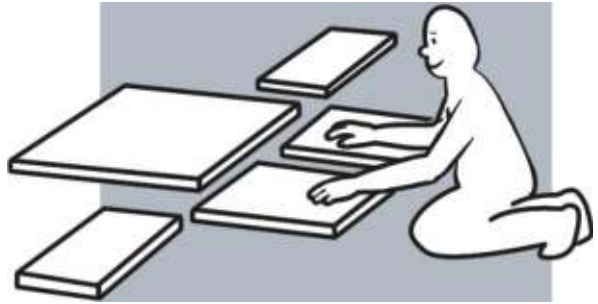
Before you start...

1



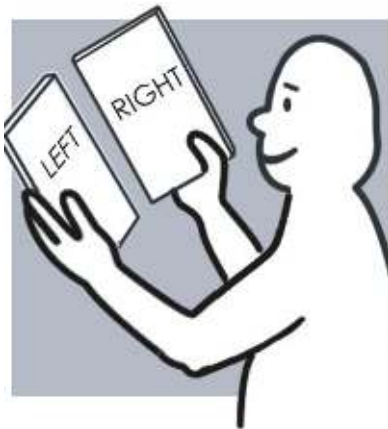
Read Instructions carefully.

2



Lay out all of the components on a soft surface as if you were preparing to do a jigsaw puzzle.

3



Carefully identify each component, especially those that are similar. The most common mistake is getting things back to front.

4



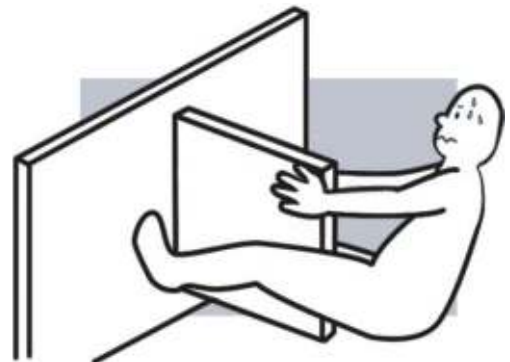
Separate and identify each component from the hardware pack— and rest each one in its proper location before fastening.

5




**DO NOT** Over-tighten screws

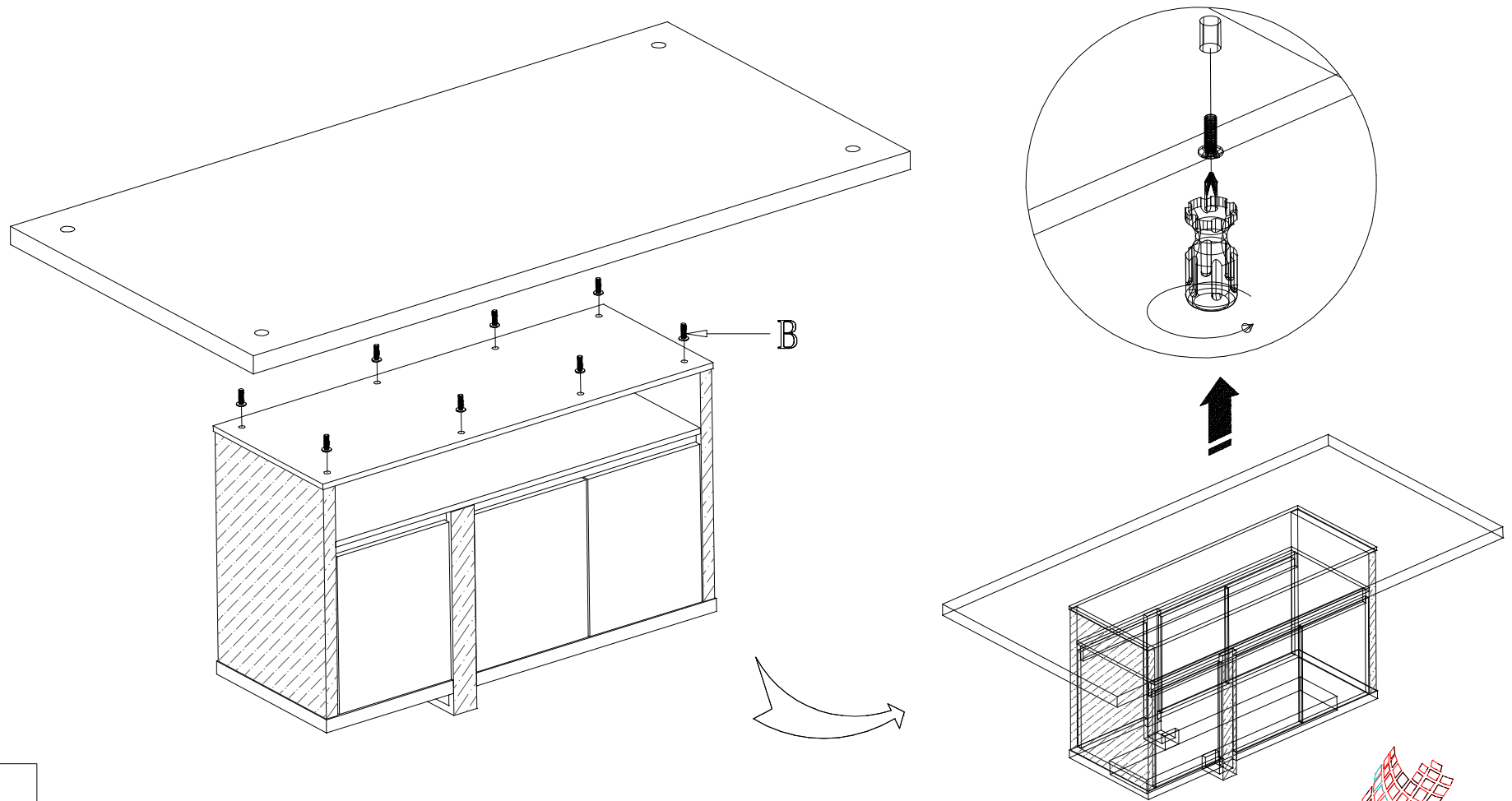
6



**DO NOT** set glue until you are certain that the parts belong together.


# PALDT

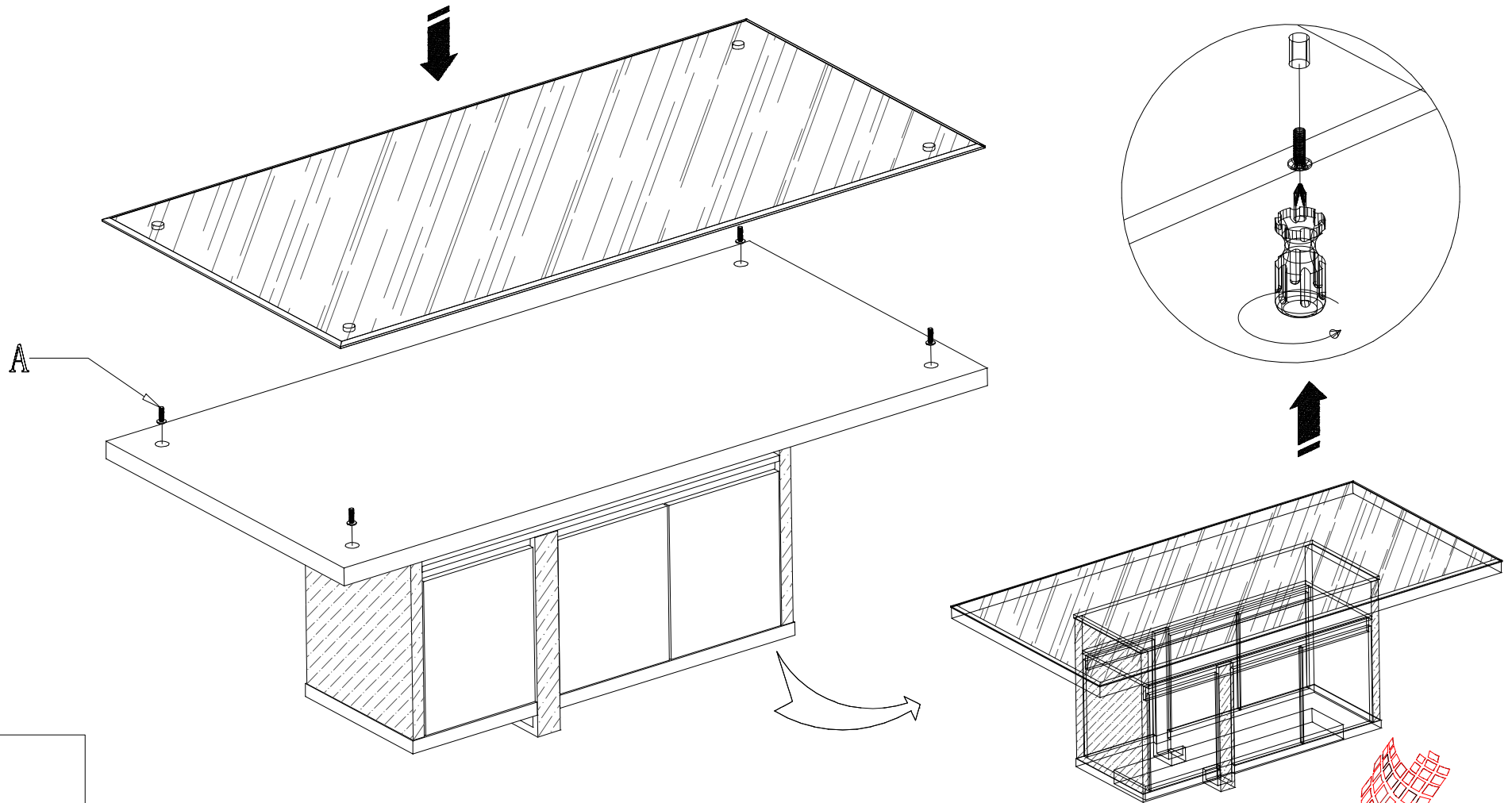
Step 1: a .Attach the panel to the main body with B(  ) threaded wire as shown.



B. 8x Threaded  
wire M6x30

# PALDT

Step 2: a .Put the glass top to the top panel, and fix the glass top to the panel with A(  ) threaded wire as shown.



A. 4xThreaded wire M6x45

# PALERMO DINING TABLE

## UNIT COMPLETE

